

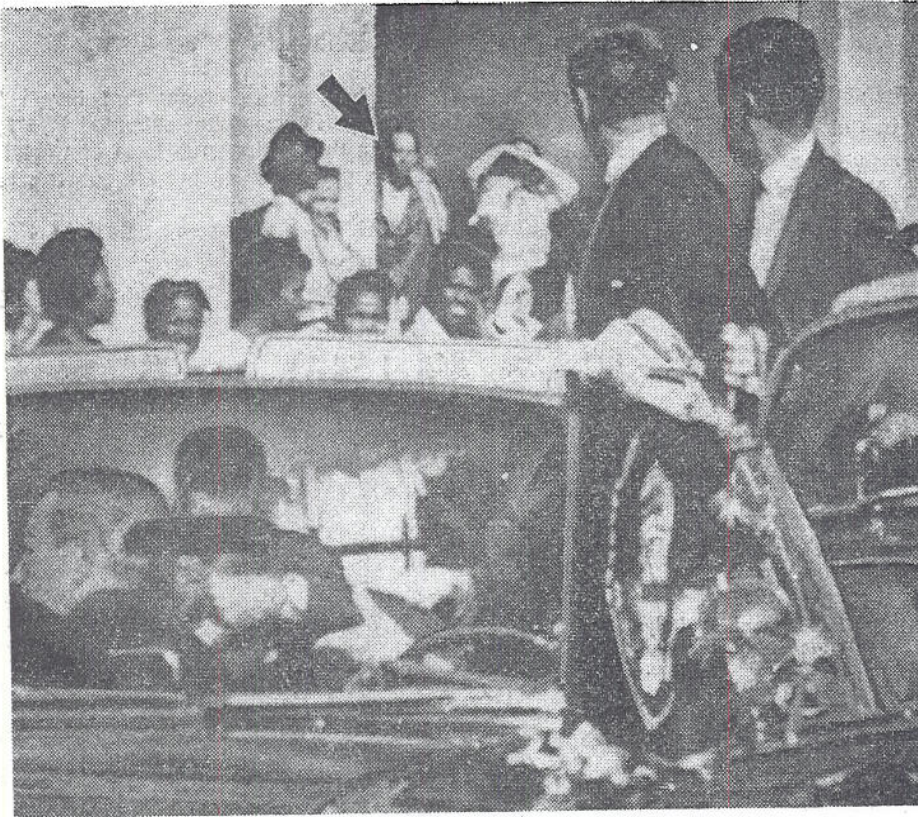
24 May 1964

CHR

SFChron

See record file, May 24, '64
Guardian, May 30, '64

CHRONOLOGICAL
2 DEC 1963
AP 7 PCS



This is the photo in question. President Kennedy (second from left) clutched his chest as onlookers stared at the school book building. Arrow indicates the man who is said to resemble Lee Harvey Oswald.

Assassination Photo

The Mystery of Kennedy's Death

New York

The New York Herald Tribune last night again published what it called "probably the most controversial photograph of the decade."

It is an Associated Press picture of President Kennedy's assassination last November 22 in Dallas, with a man standing in the background in the first floor entrance of the Texas School Depository Building.

The man in the picture taken by A.P. photographer J. W. Altgens resembles Lee Harvey Oswald, who was formally accused of slaying the President by rifle fire from a sixth floor window of the building. Oswald was shot to death two days later by Jack Ruby.

INTEREST

The picture, the only one of the assassination taken by a professional, aroused interest here and abroad as long ago as December 2. If the man in the picture actually had been Oswald, it would seem to prove that he was not the as-

sassin because he would not have had time to reach the building entrance after the shots were fired.

However, at that time the Associated Press quoted R. S. Truly, superintendent of the Book Depository, as saying the man in the picture was Billy Lovelady, another employee of the firm, where Oswald also worked.

"I showed the photograph to Lovelady," Truly said at the time, "Who said 'Yes, that's me.'"

REVIVAL

Lovelady said again yesterday through his employer that it was he and not Oswald who appears in the picture.

The picture was published here and abroad at the time of the assassination and again yesterday accompanied by a revival of the story.

At the time the picture first came to public notice last December, the FBI said it also had investigated the photograph and was satisfied that the man shown in the picture was not Oswald.

Associated Press



LEE HARVEY OSWALD
He was accused